

DP-2200

Digital Ultrasonic Diagnostic Imaging System



Features:

- ▶ Digital beam-former
- ▶ 10" non-interlaced monitor
- ▶ Wide applications: abdominal, urology, GYN, OB, small parts, and orthopaedics
- ▶ One USB port and optional DICOM
- ▶ Triple-frequency transducer series, max frequency up to 10MHz
- ▶ Two transducer connectors (optional)

Standard Configuration:

- ▶ DP-2200 main unit
- ▶ 10" non-interlaced monitor
- ▶ One transducer connector
- ▶ 128-frame CINE loop
- ▶ 90-frame image storage
- ▶ One USB port

- ▶ Measurement & calculation software packages
- ▶ Electronic convex array transducer: 35C50EB (2.5/3.5/5.0MHz)

Optional :

- ▶ Electronic linear array transducer: 75L38EB (5.0/7.5/10MHz)
- ▶ Electronic linear array transducer: 75L60EA (5.0/7.5/10MHz)
- ▶ Electronic endocavity transducer: 65EC10EB (5.0/6.5/8.0MHz)
- ▶ Electronic micro-convex array transducer: 65C15EA (5.0/6.5/8.0MHz)
- ▶ Electronic micro-convex array transducer: 35C20EA(2.5/3.5/6.0MHz)
- ▶ Two transducer connectors
- ▶ Needle-guided brackets
- ▶ DICOM3.0
- ▶ Footswitch
- ▶ Mobile trolley
- ▶ Hand carried bag



Multi-frequency Transducers:



35C50EB Convex
Applications: Abdomen, GYN, OB, Urology



75L38EB Linear
Applications: Small Parts



75L60EA Linear
Applications: Orthopedics, Breast, Musculoskeletal



65EC10EB Endocavity
Application: Endovaginal, Endorectal

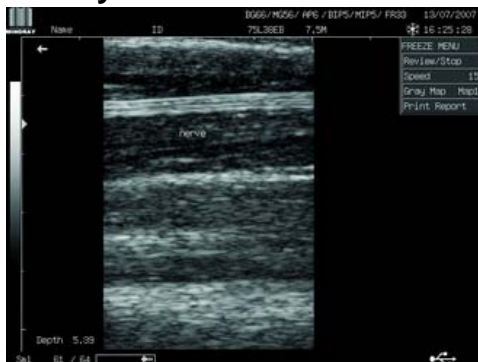


65C15EA Micro-convex
Application: Pediatrics

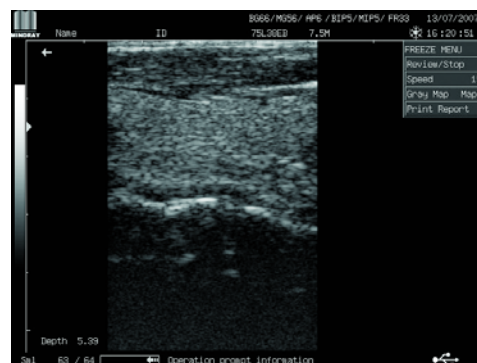
Needle-guided Brackets:



Gallery:



Median nerve



IVC

Please notice: The quality of images presented on the World Wide Web varies greatly depending on the computer system, monitor, and web browser used to visualize the images. For that reason, Mindray does not recommend that you use the images as shown here to judge the system image quality. Write to Mindray to receive hard copy images for this purpose.